

# RAISING THE BAR FOR EXCELLENCE

## **i3D** *Premium*

**LARGE 21X19 FOV FOR COMPLETE  
DIAGNOSTIC IMAGING NEEDS**

**THE OPTIMAL SOLUTION FOR  
AIRWAY AND ENT DIAGNOSIS**

**AUTOMATICALLY GENERATES UP TO  
6 TYPES OF IMAGES IN 1 SCAN**

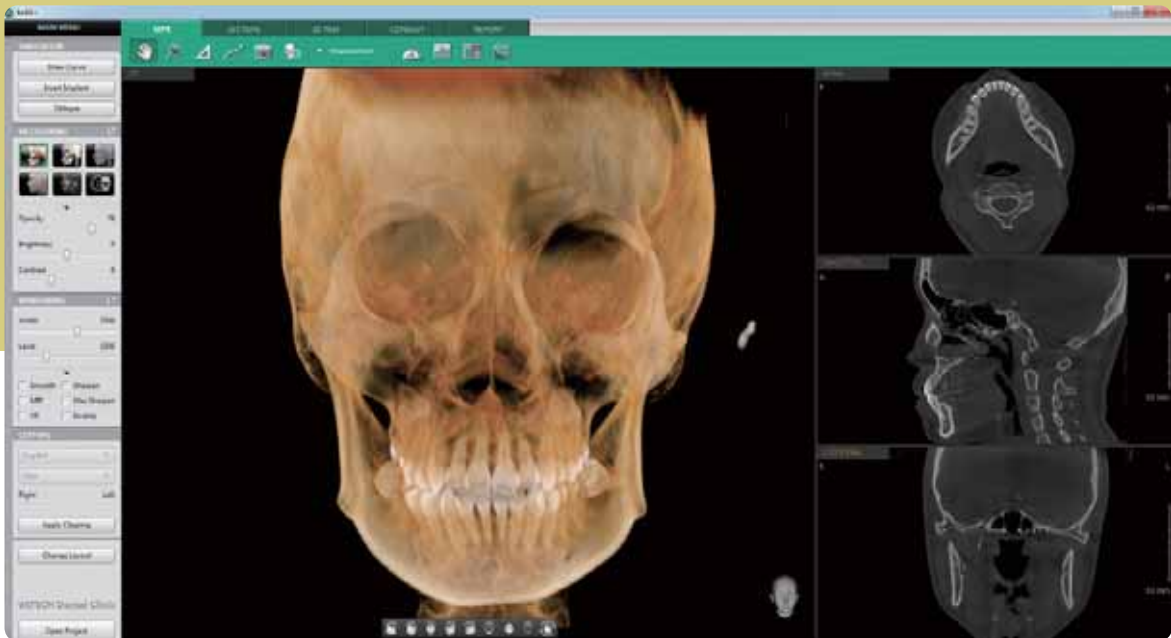


**\*i3D Premium is expected to launch in the fourth quarter of 2016.  
Launch date is subject to change without prior notice.  
Please contact your local Vatech representative for more information.**

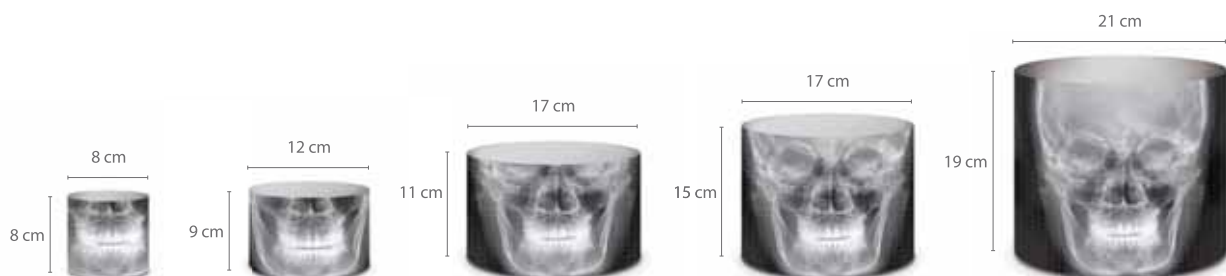
# THE MOST SUITABLE FOV SIZE FOR A COMPLETE DIAGNOSIS

A 21X19 FOV is the optimal size for Oral Maxillofacial Surgeons and Orthodontists. Anatomically, it captures the regions from the roof of the orbits and nasion down to the hyoid bone.

- ✓ Oral and maxillofacial surgery
- ✓ Facial reconstructions
- ✓ Orthodontic treatment planning
- ✓ Complex orthognathic cases



The i3D Premium utilizes a proprietary 49.5  $\mu\text{m}$  high resolution X-ray sensor which makes it the finest pixel and highest resolution CBCT available on the market today.



## [Multi FOV]

The i3D Premium offers a wide range of selectable Fields of View (FOV).

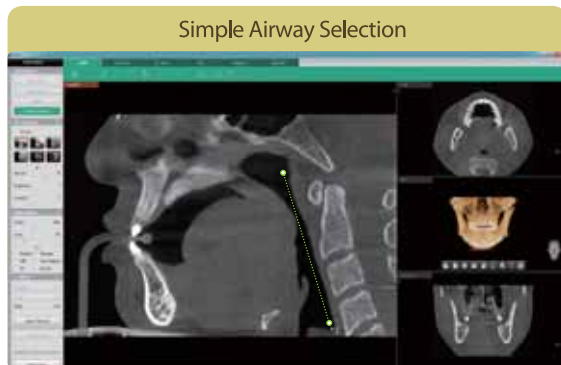
This selectable FOV helps limit patient radiation exposure, and allows users to capture only the region of interest. Clinicians can select between 21X19, 17X15, 17X11, 12X9 and 8X8 fields of view.



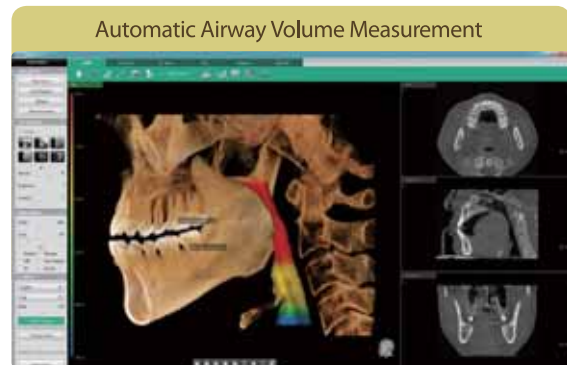
# THE OPTIMAL SOLUTION FOR AIRWAY AND ENT DIAGNOSIS

The i3D Premium provides an ENT mode (Airway/TB&PNS) for ENT specialists. The fields of view are based on patients' most common cases such as cholesteatoma, chronic sinusitis, and sleep apnea.

## [Airway] A Powerful Function for Airway Volume Analysis

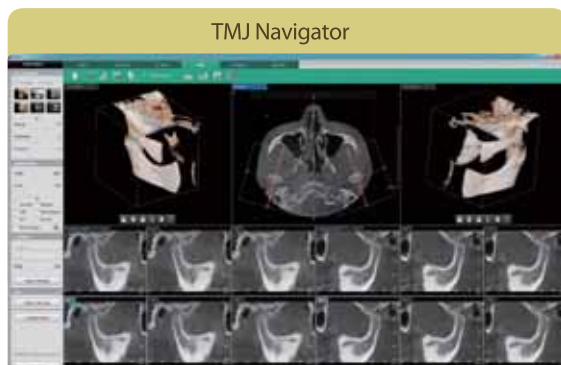


- 2-click airway region selection

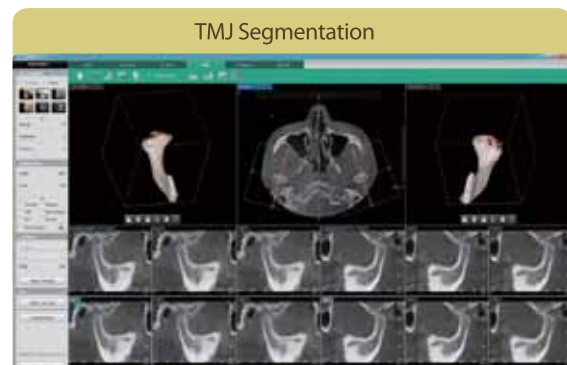


- Segmented airway volume and color coded thickness measurements
- Automatically calculated total volume and minimum area measurements

## [TMJ] Simultaneous Analysis for both TMJ



- Instant auto cross-sectional images



- Separate condyle or fossa
- Rotation for an accurate diagnosis
- Easily Segment and Separate the Condyle or Fossa

\*Airway & TMJ analysis available on Ez3D-i V4.1

# AUTOMATICALLY GENERATES UP TO 6 TYPES OF IMAGES IN 1 SCAN

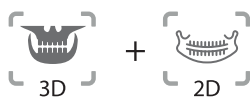
One scan with the i3D Premium, you can capture the raw data needed for a CBCT, Panorama, PA Ceph, Lateral Ceph, SMV Ceph and Waters' View Ceph.

With these images, the system is capable of providing images for craniofacial, maxillofacial and orthodontic treatment planning.

## VALUE-ADDED AUTO IMAGE SELECTION



Select the image type needed for your treatment plan.



\* Conventional Panorama mode is included.

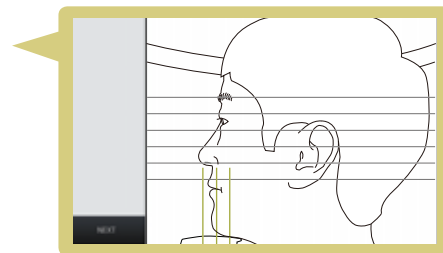


# i3D Premium

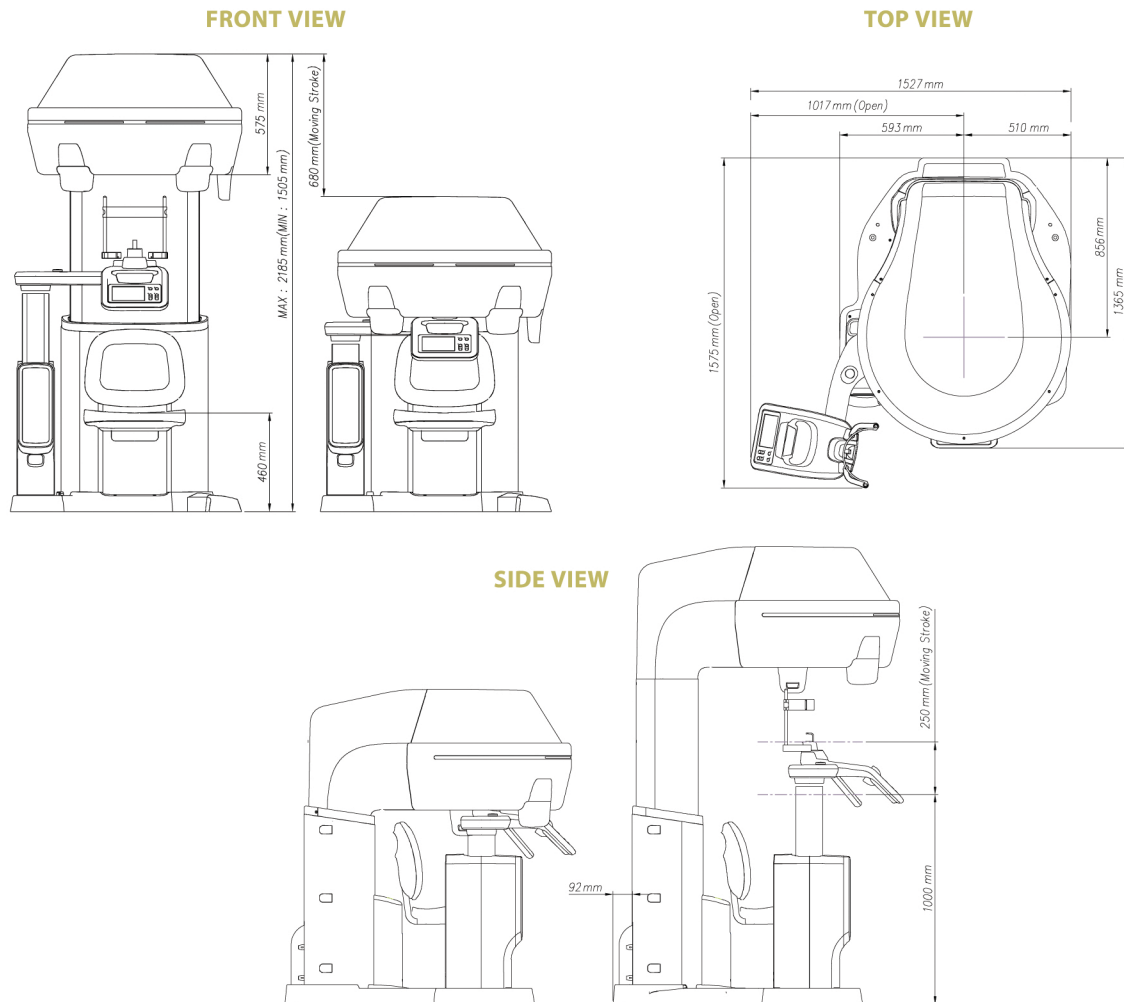
i3D Premium is a multi-modality CBCT, with the most comprehensive set of FOV sizes collimated from 21X19 to 8X8, and provides a whole array of diagnostic tools to clinicians.



- **Simple Patient Positioning**  
The step-by-step instructions shown on the LCD control panel aids in patient positing.
- **Space Efficiency**  
The built in accessory box reduces clutter and keeps the space organized.
- **Posture Stability**  
Maximize patient stability by utilizing a seated position.
- **Wheelchair Accessibility**  
A detachable chair accommodates wheelchair access.



## DIMENSIONS



## SPECIFICATIONS [i3D Premium : PCT-90LH]

<b>Function</b>	CT (Auto Pano/Auto Ceph) + Pano + i-Ceph* + 3D Photo	
<b>CT FOV Size</b>	Dental	21X19 / 17X15 / 12X9 / 8X8 cm
	ENT	21X19 / 17X11[TB&PNS] / 17X11[Airway] cm
<b>Scan Time</b>	Pano	13.5 sec
	CT	Max. 18 sec
	i-Ceph	18 sec
<b>Voxel Size</b>	0.2 / 0.3 / 0.4 mm	
<b>Focal Spot Size</b>	0.5 mm [IEC60336]	
<b>Gray Scale</b>	14 bit	
<b>Tube Voltage</b>	60 - 120 kV	
<b>Current</b>	4 - 10 mA	
<b>Weight</b>	321 kg (708 lbs)	
<b>Dimensions</b>	1575(L) X 1527(W) X 2185(H) mm	

\* i-Ceph provides X-ray image similar to Ceph at lower dose than a CT.

• i-Ceph & 3D Photo functions are optional.  
 • The specifications are subject to change without prior notice.



**Equipo Dental de Radiología  
 Digital Avanzada, S.A. de C.V.**  
 Felipe Guerra Castro 3216, Col. Hidalgo, 64290  
 Monterrey, NL, Mexico Tel. 52(81)83442082  
 edrdigitalventas@hotmail.com  
 www.radiologiadentaldigital.mx